

# Gold Wing Road Riders Association

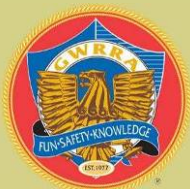


## "Insight"

GWRRA News & Information  
from the International Team

Volume 2, Issue 2

February 2011



### **Director GWRRA**

Mike & Lori Stiger  
(517) 769-4824

[Director@gwrra.org](mailto:Director@gwrra.org)

### **Deputy Directors**

Jere & Linda Goodman  
(347) 564-1161

[jeregood@aol.com](mailto:jeregood@aol.com)

Dave & Gwen Carter  
(815) 260-2294

[foxwing1@sbcglobal.net](mailto:foxwing1@sbcglobal.net)

### **Program Directors**

#### Rider Education

Gene & Betty Knutson  
(352) 428-0785

[fop4051@gmail.com](mailto:fop4051@gmail.com)

#### Membership Enhancement

Ed & Linda Johnson  
(276) 628-5535

[MED4U@comcast.net](mailto:MED4U@comcast.net)

#### Leadership Training

Paul & Cheryl Brosher  
(614) 270-1256

[pbrosher@sbcglobal.net](mailto:pbrosher@sbcglobal.net)

#### Finance

Jeff & Cherri Liner  
(423) 336-5835

[jeffcherri@charter.net](mailto:jeffcherri@charter.net)



## Wing Ding 33 News

### Destination Rides Announced!

This years Wing Ding promises to be extra special with new features such as Destination Rides, Riverboat Cruises, and more!

These Destination Rides are available to pre-registrants only.

More details can be found at <http://www.wing-ding.org/> under the Information tab.



<http://www.gwrra.org>



<http://www.gwrra.org/oconnect/>

## Director of GWRRA

### Too much paperwork... Really?

Since taking office as your Director, on several occasions I've heard that Chapter Directors are being burdened with too much paperwork. On top of that, I hear that it is increasing and were asking for more on a monthly basis than ever before and it is taking the fun out of being a Chapter Director. This caused me great concern and I looked into this issue. After careful consideration I honestly don't understand what is being said.

From a International point of view the only additional requirement in 34 years of the Chapter Director is to go online with the IRS and file a 990n at year end. Even though the IRS added this requirement for all 501(c)4 organizations, I admit this is new and an additional requirement for Chapter Directors. This requirement will take 15 to 20 minutes per year to do.

So let's look at what paperwork is require of a Chapter Director. Now I'm going to assume that this Director has a complete core Team that includes a Treasurer, Educator, and Membership Enhancement Officer. With this Team in place all program responsibilities should be taken care of by the Team. An example of such would be...

- The Educator is doing their monthly report and sending it to the District.
- The Membership Enhancement Officer is contacting the new Members and reporting their results to the District.
- The Treasurer is balancing the Chapter check book and entering those results in the yearend Financial Report.

During their time in office a Chapter Director will also need to fill out appointment paperwork for their Treasurer and Assistant, and sign as the concurring Officer for their Educator and Membership Enhancement Officer. Typically, this is a one time occurrence during their tenure as a Chapter Director. So other than filling out a one page appointment form and witness signing a MOU to appoint their Treasurer and Assistant and being an additional signature on an appointment form for their ME Officer, nothing much has changed here either.

So other than onetime appointment paperwork what annual requirements are left for the Chapter Director to complete? The Chapter Director needs to review and sign the yearend Financial Report and spend 20 minutes on the computer to file their 990n. So I must ask is that really a lot of paperwork?

In fact we have streamlined the paperwork process compared to previous times. All forms can be filled out and printed from a computer and we accept scanned images of those forms that require a signature. So not only is it faster it saves the Chapter the cost of mailing.

However, if a Chapter Director is being asked to do paperwork other than what I've mentioned, then I would like to know about it. It is not required and not needed.

[Continued on next page](#)

## Director of GWRRA

Continued from previous page

Of course if a Chapter Director is flying solo then there is more paperwork for them to complete. Perhaps this is the issue. Without a Core Team working with their Appointing Officers to complete the requested monthly reports, the Chapter Director is finding themselves responsible to do this. This is why they need a complete Core Team taking care of the Chapter's Program responsibilities. They need to contact their District Program Officers and get some help in identifying and selecting Members in their Chapter to build their Core Team. We are here to support the Chapter Director and do everything we can to help them to be a success. Our International, Region and District Program Officers will not only help our Chapter Directors to appoint an Officer, we will continuously train and support those Officers efforts.

Is a Chapter Director busy in an active Chapter? You bet, but it is not on paperwork. It is on planning events, communicating with their Chapter Participants via phone, email, and newsletter. They conduct their Monthly Gathering and join in on Chapter rides. And this is the point of all this. We work to minimize the paperwork of a Chapter Director so they can focus on their real responsibility in providing FUN opportunities for their Chapter Participants to partake in. We recognize and greatly appreciate their efforts. This is the reason why we have created the Director Recognition Award Program. Our outstanding Chapter Directors are the key to GWRRA's success.

So a Chapter Director needs to have a functional Core Team to minimize the paperwork they are personally responsible for. Ensure they are using synergy to empower their Team members to take care of their duties, and use the Team to plan and provide FUN opportunities for the Chapter Participants to partake in. With that foundation in place the Chapter Director will find it takes less than one hour annually to complete the paperwork they are responsible for and be able to focus their time on building a successful Chapter.

Just a little food for thought...

Mike Stiger  
Director of GWRRA



<http://www.gwrra.org/oconnect/officerresources.html>

## Rider Education Program

### Medic First - Moving into 2011

As we head into our new year, 2011, many things are changing in CPR/First Aid. Many of our MFA Instructors have completed the newly required updates to use with our classes to be sure all the Members receive the best up to date information available.

Many rumors are circulating on chest compressions with no breaths. We can still use breaths. Compressions have changed a little but it is the way the new procedures are to be done that is the major change. CPR is still the same with a few changes that will improve the chance of survival.

We will be training using our normal programs until the new programs come out in April.

All Instructors have the new updates and will use them where they are needed in their training of our Members. Each Instructor will explain the new changes as they go through the class. They will make sure everyone understands the new changes and why they are being used for a better chance of survival.

We had an outstanding 2010, teaching over 1600 members. We sent out 9 life-saving awards in 2010 and look forward to sending out more in 2011.

The Membership of GWRRA is the best anyone can ask for in an outstanding organization. The Members came forward when someone needed help and stayed there until help arrived and went above and beyond to help.

We look forward to another year of Rider Education to train our Members and provide the best up to date information available.

We have outstanding Instructors in other organizations such as American Red Cross, American Heart Association and ASHI. We all have one goal in mind - - to help save a life, or keep the injured person as comfortable as possible until help arrives.

Be safe, ride safe, looking forward to seeing you all in Knoxville, TN.

Larry & Rhonda Stiles  
Director, Medic First Aid/CPR

<http://www.gwrra.org/regional/ridered/medic.html>



## Rider Education Program

### Information of a Crash

On a beautiful Sunday morning (January 2, 2011) just north of the small town of Polk City, Florida, a married couple riding their Gold Wing was traveling along a country road. They were out for a fun day to get over the holiday hustle and bustle, and to get work off of their minds for at least a little while. The road for the most part does not have a center line, so you stay on your side, and hope that others will do the same.

On this fateful day, someone else did not. He crossed the road, into the motorcycles lane hitting them head on with a compact car. It has not been admitted to, but this is how so many accidents happen - - text messaging or speed. According to reports, the driver lost control. Was it speed, or text messaging, or something else, we may never know! Since a lot of accidents like this are passed over as a motorcycle mishap, and usually the driver causing the accident never gets a ticket.

My thoughts are, "What if the motorcycle had modulator lights on bright and flashing?" Would other drivers coming at you see them far enough out to slow down if speeding. Or stay on their own side of the road by knowing that you are approaching them. Or would you still get hit? It would put more odds on your side.

I do not know what kind of bulbs they had, or even if they had a modulator on their GL-1500. I feel that if they did, they might be alive today. I encourage everyone out there, no matter what kind of bike you ride, to get a modulator and use it on side roads and most NON-super highways. I do not use mine on super highways, because it has a tendency to slow traffic down in front of you, and that can cause other problems, or accidents.

In my life long history of riding motorcycles, (approximately 47 years) not counting my first 13 years learning how to walk, talk, and get along in this world, I have had a lot of vehicles, cattle, deer and other obstacles pull or run out in front of me. I have been lucky, good at controlling my motorcycle, and sometimes I feel that the good lord was with me as a Co-Rider. I have laid a bike down only once on the move, and that was shortly after moving to Florida going around a sharp turn on a back road, and discovered SAND after a rain storm. I admit that it has gone down several times due to sand, oak nuts, wet grass, or someone in a parking lot pulling out in front of me while I was turning. Every day that I ride my motorcycle, which is nearly every day, I think of what would happen if that idiot up there pulls out, or if the car next to me pulls into my lane and cuts me off.

Some things cannot be prevented, no matter what you do. But I have had fewer incidents since I started using my modulated lights with extra bright white lights. They can be seen, even on street signs 50 yards ahead in daytime. The state of Florida, and most other states ENCOURAGE motorcycles to use Modulators, on High Beam, because they know the danger we face in everyday riding. Federal DOT also accepts Modulator lights.

[Continued on next page](#)

# Rider Education Program

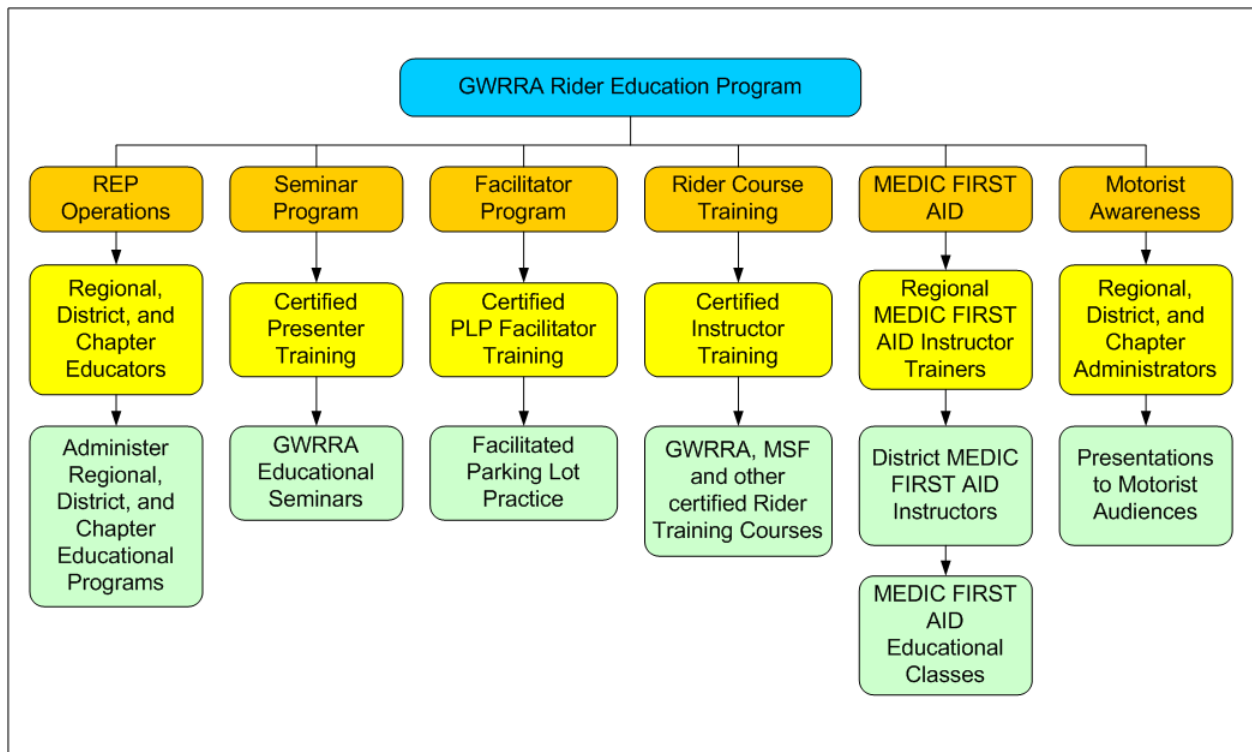
Continued from previous page

I have been told by other riders that bright lights blind other drivers, and might pull out in front of you. I disagree, and will continue to use them, and I implore you to do the same. A little cost for the Modulators is a small comparison to what it cost your family to bury you. Please consider them; I am tired of going to Funerals of friends who thought that a \$100.00 or less was too much to spend for safety.

I have left out the specific information as to who the victims were, because I want you to stop and think about other incidents that you remember, or even witnessed that Modulator Lights might have helped to prevent. Be assured that this was a true incident, and they will be missed by all of us that have had the pleasure of talking to, or riding with them. Let's start a nation wide push to save some lives. Modulator Lights can and do save lives.

Thank you for taking the time to read this, and I pray that it saves a fellow rider someday.

Bill "WACO" and Kay Corgnell  
Assistant Chapter Director & 2011 Chapter Couple of the Year  
FL2-W, Winter Haven



## Rider Education Program

### Master Tour Rider Recognition Program 2011 Calendar Year Eligibility

The following is a list of the Level IV, Master Tour Riders, eligible for the  
**MASTERS RECOGNITION PROGRAM**  
Indicating the Master numbers and year of issuance:

Please note: Eligibility occurs at the conclusion of the 5, 10, or 15 year participation period and assumes active continuing participation and renewal for that period of time.

Eligibility	Year Issued	Master Number Range*
<i><b>Life Grand Master</b></i>	1992 & Earlier	001 - 350
	1993	351 - 600
	1994	601 - 650
	1995	651 - 1000
	1996	1001 - 1460
<i><b>Grand Master</b></i>	1997	1461 - 1640
	1998	1641 - 2000
	1999	2001 - 2750
	2000	2751 - 3300
	2001	3301 - 3800
<i><b>Senior Master</b></i>	2002	3801 - 4408
	2003	4409 - 4974
	2004	4975 - 5578
	2005	5579 - 5903
	2006	5904 - 6330
<i><b>Master</b></i>	2007	6331 - 6828
	2008	6829 - 7364
	2009	7365 - 7832
	2010	7833 - 8250
	2011	8251 - ????

\*Master Number Range contains numbers known to have been issued during that calendar year. Year of application is based on the application approval date, not on the date of entry into the database. In some instances, Master Numbers may have been issued out of sequence (e.g.: up to 5989 in 2005) causing a number to be issued in a year other than indicated. These minimal occurrences are to be ignored to simplify the tracking as well as to benefit the affected members.

## Membership Enhancement Program

### Retention of Members Needs Help From All

Several weeks ago we were discussing Membership Retention issues with GWRRA Director Mike Stiger. He pointed out that we were losing the majority of our Members who had only been Members for 1 - 3 years. Unusual you say! Our thoughts were along the same line. Then it became clear to us that Members originally join GWRRA for either 1 or 3 years and then they fail to renew. The next question I asked was, "why do these Members fail to renew"? It was then that we decided to ask each District Director to personally send a letter to each Member who has been a Member for 1 - 3 years and was going to expire in the first quarter of 2011. From the letter that was sent out, we wanted to know if the Member was planning on renewing, and to let them know that they are an important part of our GWRRA family. In addition, it was asked if the Member had been contacted by someone in a Chapter or anyone else from GWRRA. Furthermore, for those Members who were not going to renew their Membership, they were asked to contact their District Director or a member of their Team to discuss any improvements that could be made in GWRRA that would influence them to renew their Membership.

We must have pushed the right button. We don't know how many emails or responses the District Directors are getting, but today alone we have received several emails from concerned Members. What was the main theme of the emails we received? "No one from GWRRA has contacted me". "No one made me feel welcome when I attended an Event"! "No one talks to me"! "No one tells me what is going on"! "No one rides"! We are in amazement that no one is contacting the Members and making them feel welcome.

Sometimes we are our own worst enemy. We sit back and wonder why we are losing Members yet we do nothing. Is the answer right in front of us? If we listen to what our own Members are telling us, than we need to spend more time contacting Members, talking with them, and making them feel welcome.

You may be saying to yourself, this is not happening in your Chapter. If you are correct, we applaud you and know that you are doing a great job contacting and welcoming Members to your Gatherings and Events. Consider that you are incorrect and Members are not being contacted. Then we urge you and your fellow Chapter Participants to reach out to all Members by making contact with them. Even if you have been contacting New and long time Members, let's do it better. If you're not contacting them please start now. Contact those Members who have not been contacted and invite them to a Gathering or Event. Let them know they are important to our GWRRA family and help them to understand how GWRRA works. Explain the benefits and acronyms and tell them about the Programs within GWRRA. Tell them where they can find more information regarding GWRRA and its programs. Each Member we retain will strengthen our Association and help with its growth. "Strength and Growth come only through continuous effort and struggle....." by: Napoleon Hill.

Ed & Linda Johnson  
International Director, Membership Enhancement Program



## Membership Enhancement Program

It's already January 2011, can you believe it? This brings about a New Year, New Chapter Directors, and New Team Members.

GWRRA has an Operational Program, Rider Educator Program, Leadership Training Program and of course our favorite is the Membership Enhancement Program.

Effective January 1, 2011, all Membership Enhancement Coordinators are considered Officers in GWRRA. As such, they will all be required to sign a Memorandum of Understanding (MOU) and an Officer Change/Appointment Worksheet. The MOU and worksheet can be found on the O'Connect at <http://www.gwrro.org/oconnect/>.

Some new rockers are being made for the new positions. They will have the Team Name (Chapter, District, Region or International Team) across the top. Position rockers for Director, Treasurer, Educator, Membership Enhancement or Trainer across the bottom. Here are a few examples:



One of the goals set by the Director of GWRRA, Mike Stiger, is to have a Membership Enhancement Coordinator (MEC) in all Chapters. Although the duties and responsibilities of the Chapter Membership Enhancement Coordinator are rather simple, easy, and take just a few extra hours a month, think how much better this will be for Chapter Directors if they didn't have to worry about the MEC part of the Chapter Team.

One Membership Enhancement Program that has received a lot of attention recently is the Chapter of the Year Program. Paul Hildebrand, GWRRA Founder, Mike Stiger and many others have given many accolades to this Program. The goal of the Program has been positively changed in 2011 to try to get more Chapters involved and more Chapter members involved doing more GWRRA activities. All Chapters that get involved in this Program will be better, stronger Chapters, which will be sure to grow. This Program needs encouragement and support from Region and District Teams.

Bob and Karla Greer  
Assistant Directors, Membership Enhancement Program

## Membership Enhancement Program



### Ham Radio SIG Representatives

We are Robert & Joan Partigianoni and we are very proud to accept the position as Ham Radio SIG Representative. We are looking forward to working with the Membership Enhancement Team and all of the GWRRA Members. We live in Leesville, LA, home of Fort Polk and the Gateway to Toledo Bend Lake, the largest man-made body of water in the south.

We were married in June, 1970 in our home state of New York. We have been Members of GWRRA since June, 2008. We have served Chapter LA-M as Assistant Chapter Directors, Phone Tree Coordinators and Activities Committee Coordinators. We are currently serving as Newsletter Editors and Webmasters. We are both Level IV (Master Tour Riders) in the Rider Education program. We ride a 2008 Gold Wing GL 1800 with a California Sidecar Trike Conversion Kit. Since purchasing our Gold Wing, we have traveled 54,000 miles to one of our favorite things to do...Rallies.

We have been Ham Radio Operators since 1973 and 1974 respectfully. We have operated in New York, Colorado, New Hampshire and Louisiana. We both hold Amateur Extra Class tickets. Joan is a CVE which is a Ham Operator that can administer tests to people who want to earn a Ham Radio license. We presently have a Kenwood D700A on the trike and operate APRS on the left side of the radio with a beacon going out every 5 minutes and locally we operate on 145.310 MHz with a PL 203.5 tone. On trips we put the right side of the radio on 146.520 MHz simplex and usually talk to an occasional trucker and some home stations in the bigger cities.

We are excited to be serving the great Members of GWRRA in the position of Ham Radio SIG Representative. We have met and made many friends in this great organization and look forward to meeting more. We would like to expand the number of Ham Radio Operators operating from their motorcycle and answering their questions. Robert will be on the Message Boards and you can always contact us by phone or email.

<http://med.gwrra.org/sigs/hamradiosig.html>

## Membership Enhancement Program

### Let's talk about your "GWRRA Chapter Vest"



- We wear our vest during GWRRA Functions to show our "Chapter/District/Region pride and unity".
- You can customize your vest any way you want the only thing we ask is that you place the Chapter/District/Region Patch and the National GWRRA patches as shown.
- Officers need to have their "Chapter/District/Region Team" rocker over the front 4" patch and their Officer position rocker below the 4" patch. If you are an Assistant Officer the Assistant rocker goes below the Officer position patch.



## Leadership Training Program

### Meet the Directors

We are Paul and Cheryl Brosher and we hail from Hilliard, Ohio. We have been Members of GWRRA for 25+ years. We are both retired now and enjoy the easier life (that just means no alarm clock). It is as the old saying goes, "I don't know how I had time to work". For a part time job, we go pick up brand new cars for a Ford Dealership. It's really nice to drive those nice new never been driven vehicles, about like the time you picked up that brand spanking new Wing. Which by the way we ride a 2004 Candy Red with matching Escapade trailer.

We started out riding on a 1975 Gold Wing Standard with Vetter fairings and NO saddlebags. Now, I can't even get away from the house without a trailer full of stuff if we're going for more than one day. We've worn out 3 Gold Wings since that one. The last one has a while to go yet.

We got started getting involved in GWRRA in 1988 when we and a few other couples decided to start a Chapter. We were the Area Representative (AR) or as we call them now, Chapter Director. We did that for 10 years and then we were asked to go on the District Team. After 6 years there, we ended up on the Region Team where we were serving when we applied for the International Directors of Leadership Training.

In 1994, we attended the first Horizon and in 1995 we attended the first Instructors Program and became Certified Instructors. At that time, I became very intrigued with the Training aspect of GWRRA, so I followed the program from its infancy. I have seen this program grow to a very fine educational venue and we plan on keeping Training in GWRRA a Program to be proud of. This is your organization and we are here to listen to your needs and desires in the Leadership Training area. So if there are any seminars you think should be included, please feel free to contact us or your District Trainers. We have a lot of good Instructors out there and from the emails we've already received they are ready to give it their all.

We are very humbled to be chosen as your new Directors of Leadership Training and look forward to meeting everyone of you in one or more of the great seminars GWRRA has to offer. Please stay tuned into the Leadership Training Program as we have several new exciting things coming down the pike, some that were generated by you the Members.

I always like to close by saying this quote from a famous NASCAR Driver, "Drivers win races, Teams win Championships".

Paul & Cheryl Brosher  
International Directors of Leadership Training

## 2011 Events



### Wing Ding 33 "Rollin on Rocky Top"

July 6 - 9, 2011

<http://www.wing-ding.org/>

Region H	March 24 - 26th
Region K	July 29 - 31
Region L	August 4 - 6
Region I	August 4 - 6
Region E	September 2 - 4
Region A	September 15 - 17
Region D	September 15 - 17

Gold Wing Road Riders Association

Friends for Fun, Safety & Knowledge

Missouri District	March 5	Minnesota District	July 15 - 16
Florida District	March 17 - 19	Washington District	July 22 - 23
Alabama District	March 31 - April 2	New England Districts	July 28 - 30
Louisiana District	April 7 - 9	Kentucky District	August 11 - 13
Tennessee District	April 14 - 16	New York/New Jersey District	August 11 - 13
South Carolina District	April 28 - 30	Kansas District	August 26 - 27
Missouri District	April 28 - 30	Idaho District	September 2 - 4
Texas District	May 12 - 14	Pennsylvania District	September 8 - 10
Arkansas District	May 26 - 28	North Carolina District	September 22 - 24
Georgia District	June 16 - 18	New Mexico District	September 22 - 24
West Virginia District	June 16 - 18	Virginia District	October 7 - 9
Nebraska/South Dakota District	June 9 - 12	Arizona District	October 28 - 30
Idaho District	June 11	Oklahoma District	October 28 - 29

Don't see your Region or District event listed?  
  
Contact the Insight Newsletter Editors  
Rick & Madalena Buck  
  
Email: [Rmbuck@tampabay.rr.com](mailto:Rmbuck@tampabay.rr.com)